

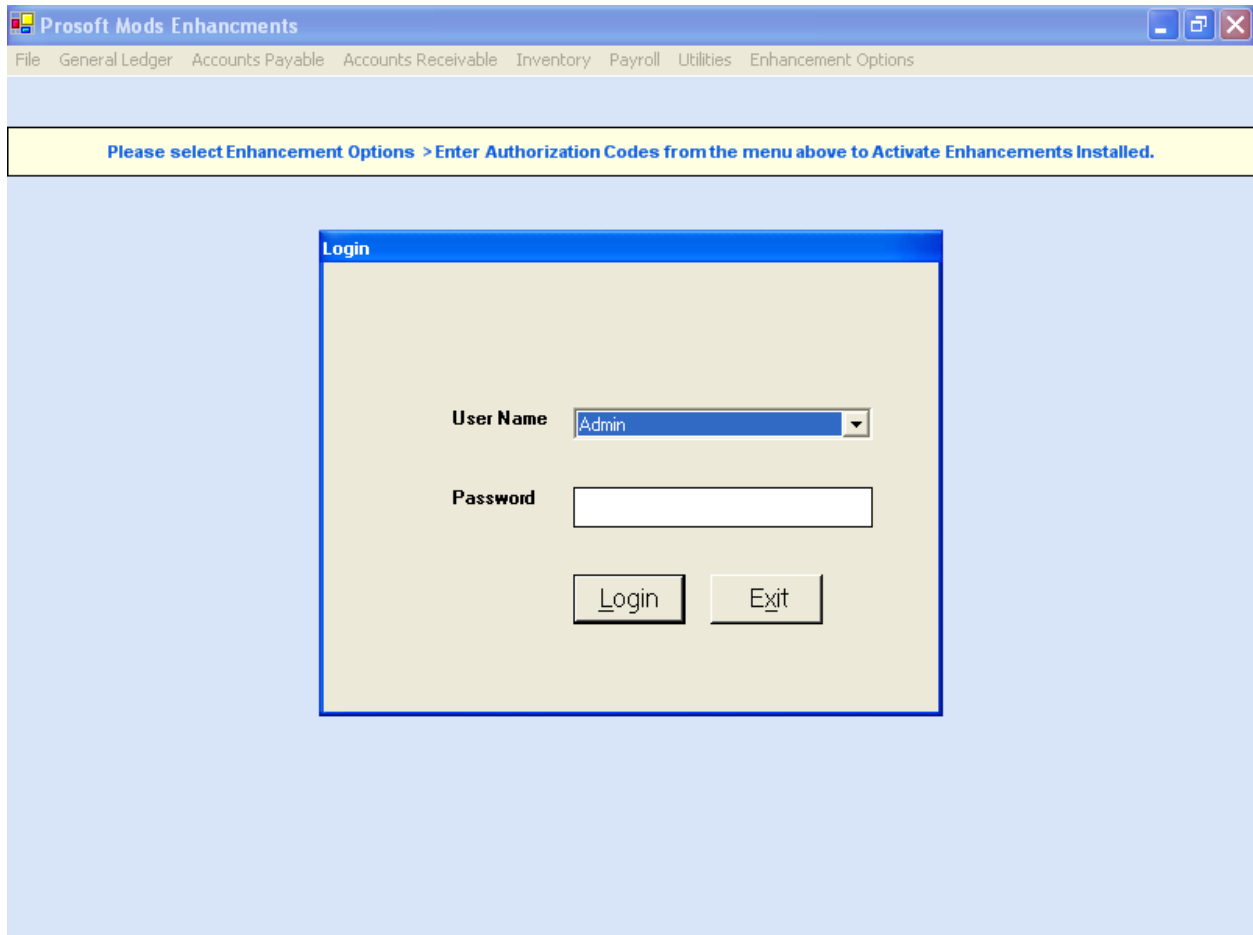
UNLIMITED SHIP TO

Unlimited ship to will allow you to enter as many ship to addresses as you need. The addresses are stored in the same data path as your Peachtree data, but are not accessible by the Peachtree program. This enhancement does not PRINT any data. When you save the data it is saved to the Peachtree data files as unposted data. You can then print it in Peachtree using your custom or Peachtree forms. You are able to make changes to the data you just saved, but you are unable to change the ship to information. If the ship to information is wrong you have to change the quote, order or invoice in this module and resave it. The following information walks you through using this enhancement. The first time you enter the module you are asked to verify the user as SKS accept this and click on the box to not ask again.

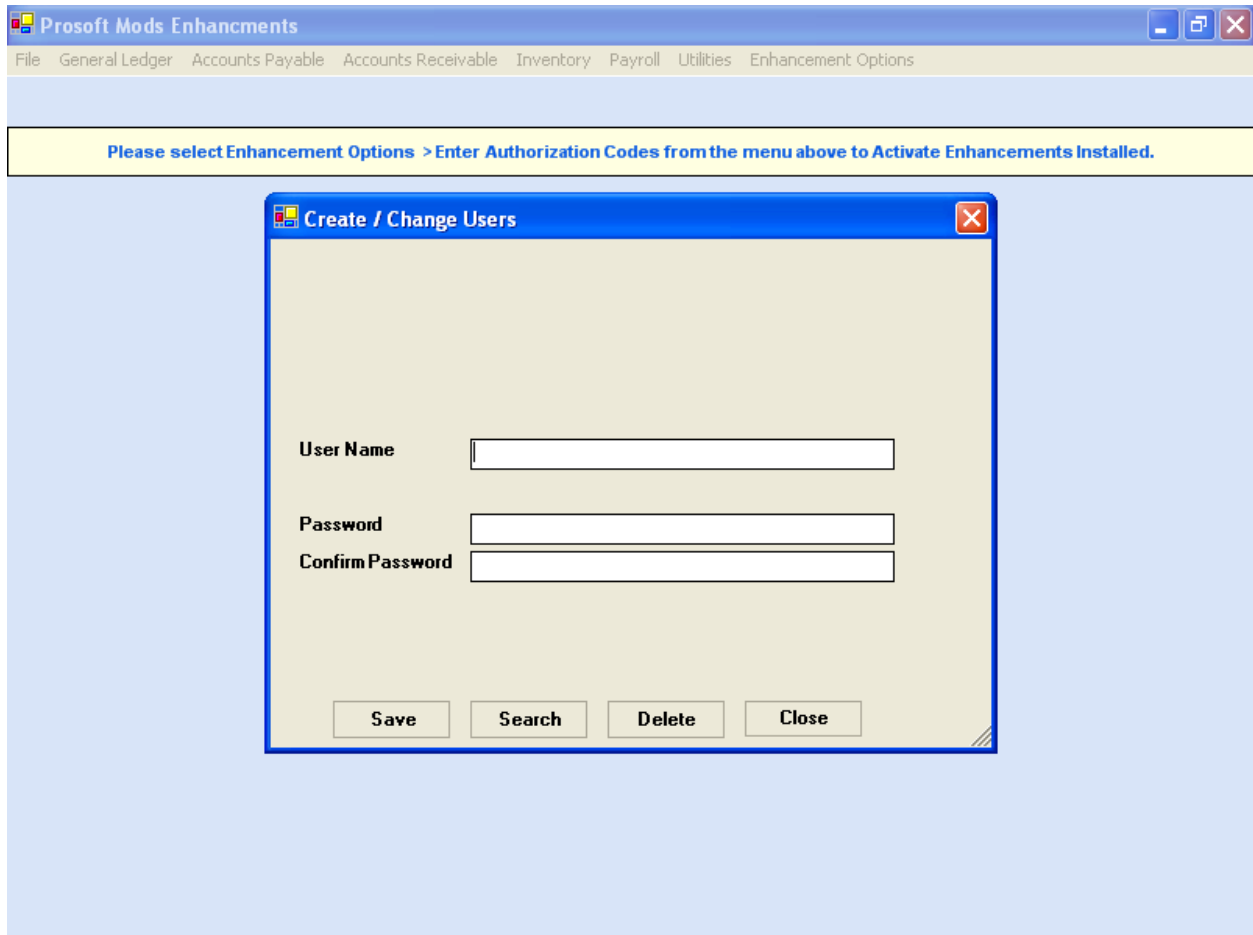
When you first load the enhancement you have 5 tries before you have to register it. If you uninstall the enhancement and try to reload it later and you have tried it 5 times it will not work unless you register it. If you run the module 5 times then unload it and then reload it later it will still know it has been run 5 times and you will have to register it. Once the module is registered it CANNOT be returned for refund or credit.

DO TO A LIMITATION WITH THE SDK GETTING DATA FROM PEACHTREE THERE CAN BE A DELAY OF SEVERAL SECONDS. WE ARE IN THE PROCESS OF TRYING TO ELIMINATE THIS PROBLEM. AS OF THIS TIME THE PROBLEM IS BEYOND OUR CONTROL.

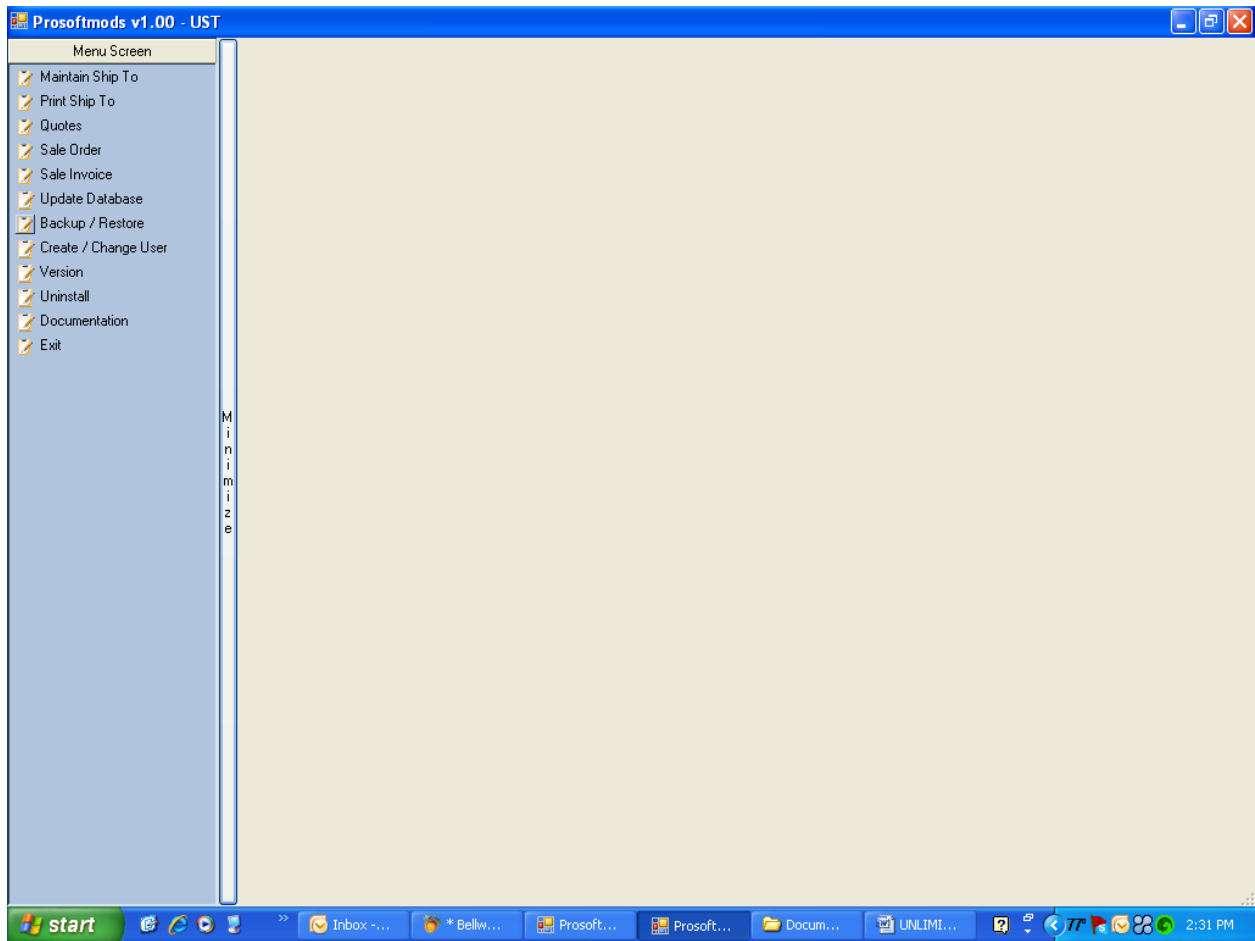
When you first enter the enhancement you are asked for a user and password. The first time in the password is 'password'.



After you have entered the first password you will be asked to enter a new user and password for future visits.



Enter your user name and password, and then confirm your password.
PLEASE MAKE A LIST OF YOUR PASSWORDS AS THERE IS NO WAY TO RETRIEVE THEM. After you have entered your password you will see the main menu.

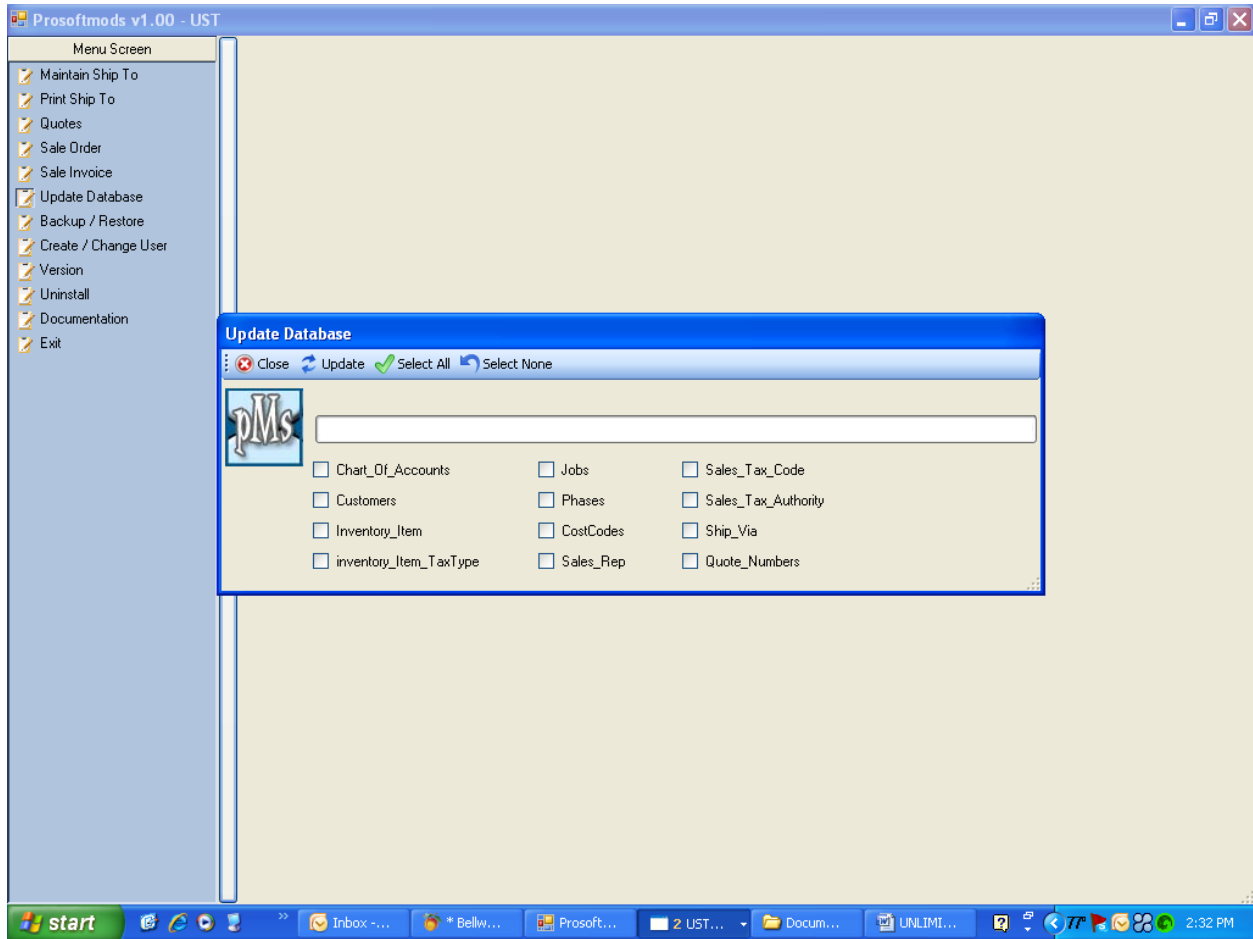


The minimize line will minimize the menu screen if you need to see more data.

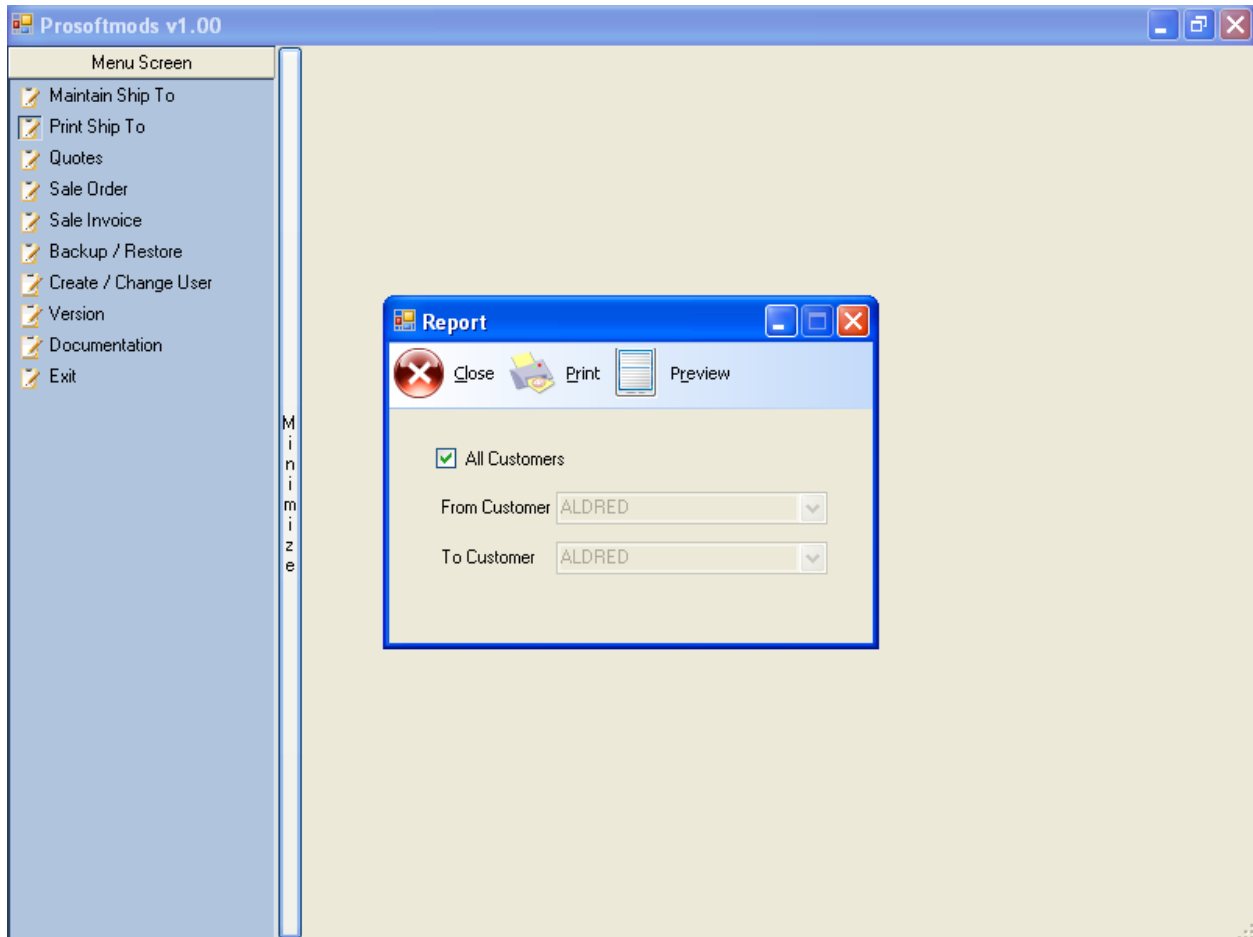


The maximize button will restore the screen to its normal size.

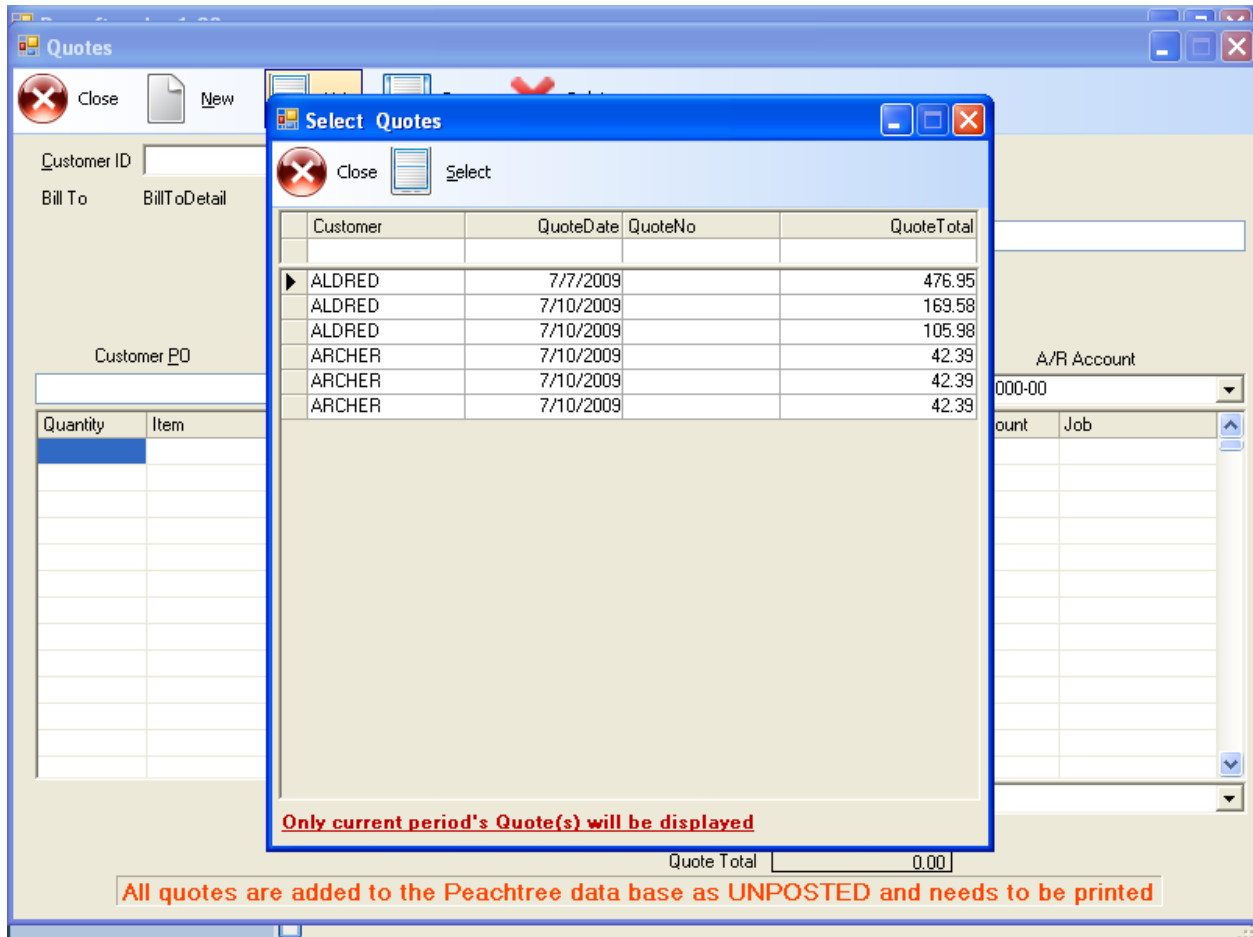
When you first access the program you will be informed that the database is not set up. When you continue the following screen will appear. Select all then update. Depending on the size of your data this may take a couple of minutes. The purpose of this routine is to make processing faster. This procedure should be run at least once a day. If you are looking for a client and it is not their run the update database.



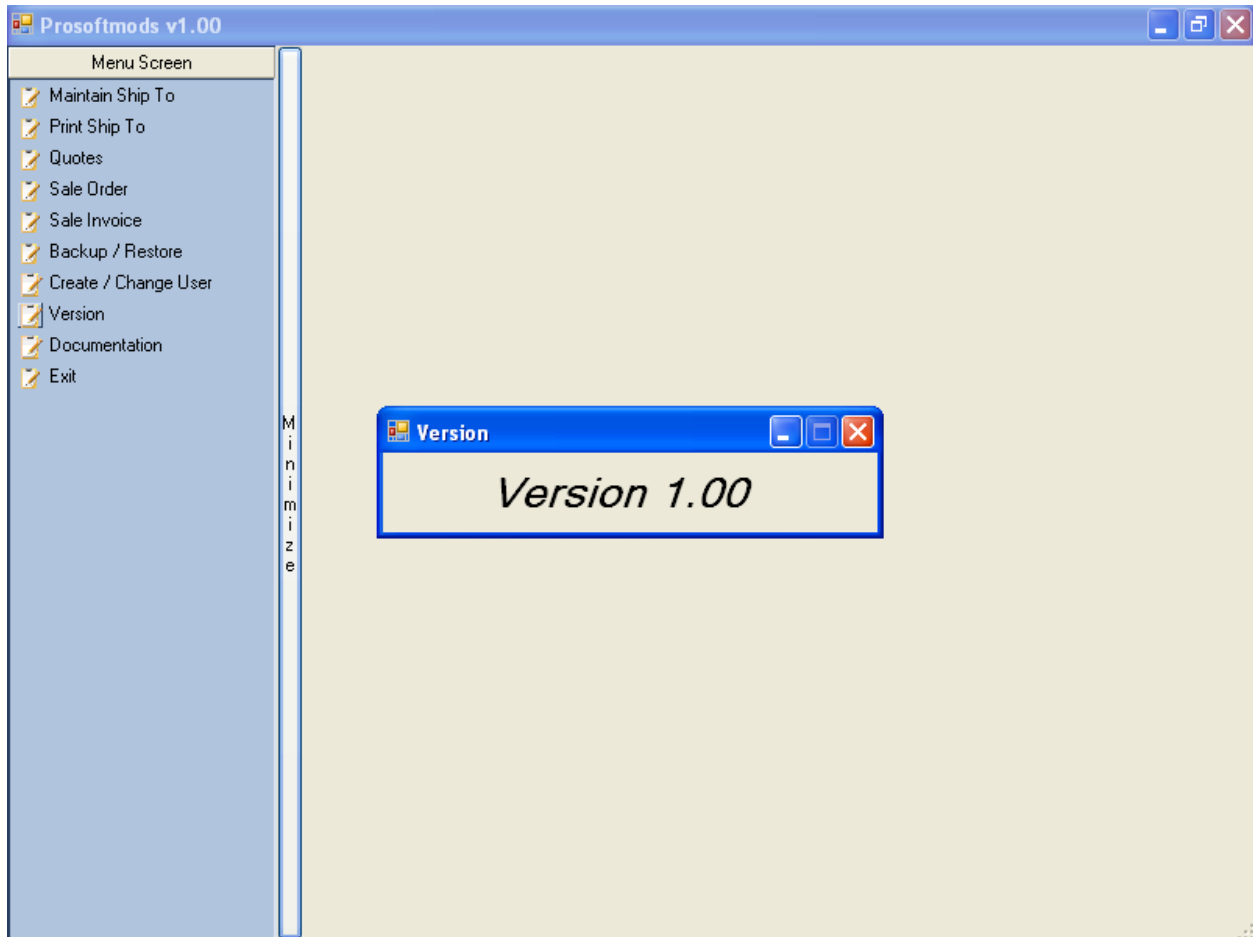
When you select Maintain Ship to the following screen will appear



You can enter Quotes as you would in Peachtree. Enter the customer and the first ship to address will show. If you want a different address hit the down button and select the correct address. The current date will show in the date field with the good thru date being 30 days out. These dates can be changed. Enter the data as you would if you were entering a quote in Peachtree. When you save the Quote it is saved to Peachtree as a un posted transaction.



The sales orders are entered the same as in Peachtree. Enter the customer Id you want and the first ship to id will appear. Select the ship to you want and the sales order information. When finished save it to Peachtree. The list function works the same as the quote list does. Shows the open sales orders for the current period. The delete function is to delete a line item.



Uninstall will uninstall the enhancement from your system.

Exit will return you to the main Enhancement menu.